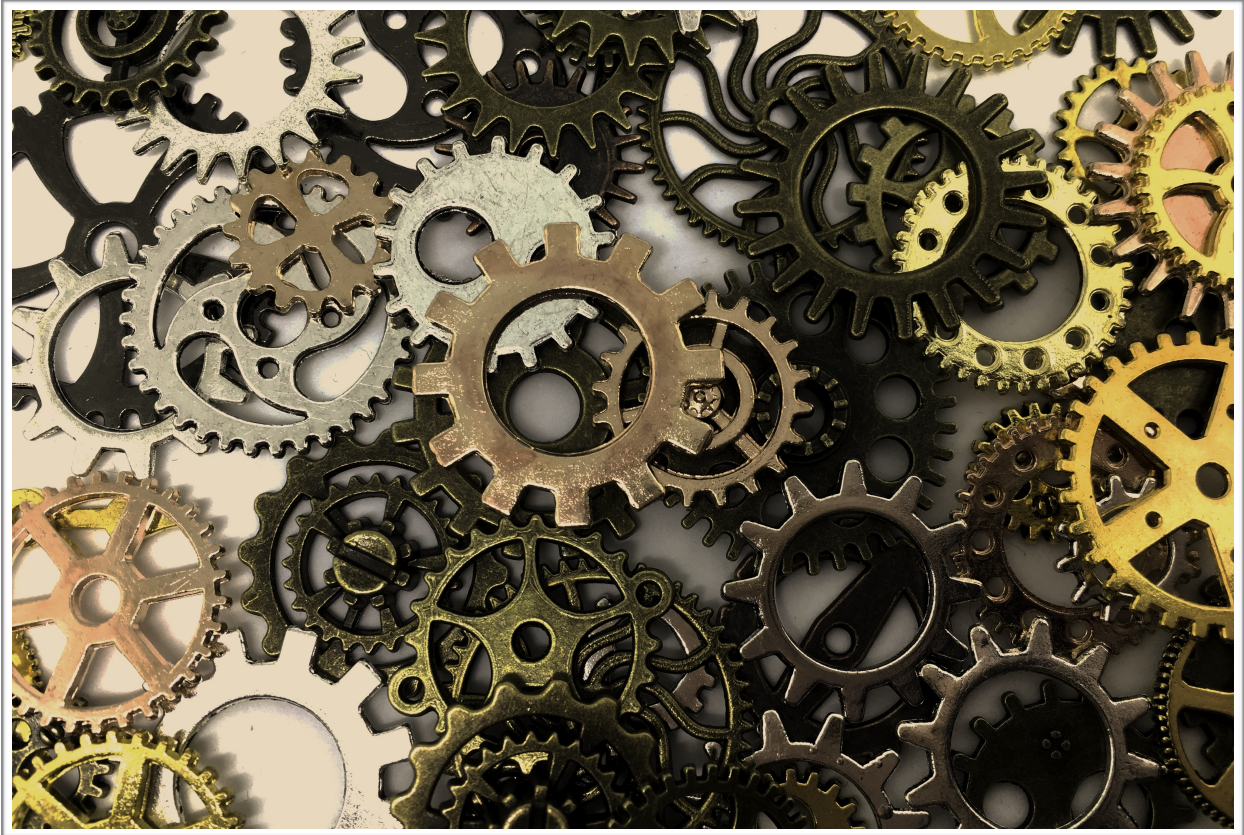


---

# Zen Cart Configuration Settings

---



That Software Guy

---

*April 2018*

*Covering versions 1.3.9-1.5.5*

|                             |   |
|-----------------------------|---|
| 1. Configuration Menu ..... | 4 |
| 1.1. My Store .....         | 4 |
| 1.2. Minimum Values.....    | 6 |

## Trademarks

Zen Cart<sup>™</sup> is a trademark of Zen Ventures, Inc. All other products or services in this document are the trademarks or service marks of their respective companies or organizations. The author is not associated with any product or vendor mentioned in this document.

## Disclaimer

Every effort has been made to make this information as accurate as possible, but no warranty is implied. This information is provided on an “as is” basis. The author shall have no liability nor responsibility to any person or entity with respect to any loss or damage arising directly or indirectly from the information in this document.

## Scope

The scope of this document is limited to the configuration and product type layout tables in the Zen Cart database.

## Copyright

Copyright © 2018 by That Software Guy. All rights reserved.

Cover photo © Pixabay.

## About the Author

That Software Guy (Scott C. Wilson) has been writing software for over 30 years. His website, <http://www.thatsoftwareguy.com>, showcases his work.

# 1. Configuration Menu

## 1.1. My Store

- Store Name (STORE\_NAME) - The name of my store
- Store Owner (STORE\_OWNER) - The name of my store owner
- Telephone - Customer Service (STORE\_TELEPHONE\_CUSTSERVICE) - Enter a telephone number for customers to reach your Customer Service department. This number may be sent as part of payment transaction details.
- Country (STORE\_COUNTRY) - The country my store is located in Note: Please remember to update the store zone.
- Zone (STORE\_ZONE) - The zone my store is located in
- Store Address and Phone (STORE\_NAME\_ADDRESS) - This is the Store Name, Address and Phone used on printable documents and displayed online
- Expected Sort Order (EXPECTED\_PRODUCTS\_SORT) - This is the sort order used in the expected products box.
- Expected Sort Field (EXPECTED\_PRODUCTS\_FIELD) - The column to sort by in the expected products box.
- Switch To Default Language Currency (USE\_DEFAULT\_LANGUAGE\_CURRENCY) - Automatically switch to the language's currency when it is changed
- Language Selector (LANGUAGE\_DEFAULT\_SELECTOR) - Should the default language be based on the Store preferences, or the customer's browser settings? Default: Store's default settings
- Display Cart After Adding Product (DISPLAY\_CART) - Display the shopping cart after adding a product (or return back to their origin)
- Default Search Operator (ADVANCED\_SEARCH\_DEFAULT\_OPERATOR) - Default search operators
- Show Category Counts (SHOW\_COUNTS) - Count recursively how many products are in each category
- Show Category Counts - Admin (SHOW\_COUNTS\_ADMIN) - Show Category Counts in Admin?
- Show linked status for categories (SHOW\_CATEGORY\_PRODUCTS\_LINKED\_STATUS) - Show Category products linked status?
- Tax Decimal Places (TAX\_DECIMAL\_PLACES) - Pad the tax value this amount of decimal places
- Display Prices with Tax (DISPLAY\_PRICE\_WITH\_TAX) - Display prices with tax included (true) or add the tax at the end (false)



- Display Prices with Tax in Admin (DISPLAY\_PRICE\_WITH\_TAX\_ADMIN) - Display prices with tax included (true) or add the tax at the end (false) in Admin(Invoices)
- Basis of Product Tax (STORE\_PRODUCT\_TAX\_BASIS) - On what basis is Product Tax calculated. Options are Shipping - Based on customers Shipping Address Billing Based on customers Billing address Store - Based on Store address if Billing/Shipping Zone equals Store zone
- Basis of Shipping Tax (STORE\_SHIPPING\_TAX\_BASIS) - On what basis is Shipping Tax calculated. Options are Shipping - Based on customers Shipping Address Billing Based on customers Billing address Store - Based on Store address if Billing/Shipping Zone equals Store zone - Can be overridden by correctly written Shipping Module
- Sales Tax Display Status (STORE\_TAX\_DISPLAY\_STATUS) - Always show Sales Tax even when amount is \$0.00? 0= Off 1= On
- Show Split Tax Lines (SHOW\_SPLIT\_TAX\_CHECKOUT) - If multiple tax rates apply, show each rate as a separate line at checkout
- Store Status (STORE\_STATUS) - What is your Store Status 0= Normal Store 1= Showcase no prices 2= Showcase with prices
- PA-DSS Admin Session Timeout Enforced? (PADSS\_ADMIN\_SESSION\_TIMEOUT\_ENFORCED) - PA-DSS Compliance requires that any Admin login sessions expire after 15 minutes of inactivity. Disabling this makes your site NON-COMPLIANT with PA-DSS rules, thus invalidating any certification.
- PA-DSS Strong Password Rules Enforced? (PADSS\_PWD\_EXPIRY\_ENFORCED) - PA-DSS Compliance requires that admin passwords must be changed after 90 days and cannot re-use the last 4 passwords. Disabling this makes your site NON-COMPLIANT with PA-DSS rules, thus invalidating any certification.
- PA-DSS Ajax Checkout? (PADSS\_AJAX\_CHECKOUT) - PA-DSS Compliance requires that for some inbuilt payment methods, that we use ajax to draw the checkout confirmation screen. While this will only happen if one of those payment methods is actually present, some people may want the traditional checkout flow Disabling this makes your site NON-COMPLIANT with PA-DSS rules, thus invalidating any certification.
- Admin Session Time Out in Seconds (SESSION\_TIMEOUT\_ADMIN) - Enter the time in seconds. Max allowed is 900 for PCI Compliance Reasons. Default=900 Example: 90 0= 15 min Note: Too few seconds can result in timeout issues when adding/editing products
- Admin Set max\_execution\_time for processes (GLOBAL\_SET\_TIME\_LIMIT) - Enter the time in seconds for how long the max\_execution\_time of processes should be. Default=60 Example: 60= 1 minute Note: Changing the time limit is only needed if you are having problems with the execution time of a process
- Show if version update available (SHOW\_VERSION\_UPDATE\_IN\_HEADER) - Automatically check to see if a new version of Zen Cart is available. Enabling this can sometimes slow down the loading of Admin pages. (Displayed on main Index page after login, and Server Info page.)

- Server Uptime (DISPLAY\_SERVER\_UPTIME) - Displaying Server uptime can cause entries in error logs on some servers. (true = Display, false = don't display)
- Missing Page Check (MISSING\_PAGE\_CHECK) - Zen Cart can check for missing pages in the URL and redirect to Index page. For debugging you may want to turn this off. Default=On  
On = Send missing pages to 'index'  
Off = Don't check for missing pages  
Page Not Found = display the Page-Not-Found page
- Currency Conversion Ratio (CURRENCY\_UPLIFT\_RATIO) - When auto-updating currencies, what "uplift" ratio should be used to calculate the exchange rate used by your store?  
ie: the bank rate is obtained from the currency-exchange servers; how much extra do you want to charge in order to make up the difference between the bank rate and the consumer rate?  
Default: 1.05 This will cause the published bank rate to be multiplied by 1.05 to set the currency rates in your store.
- Currency Exchange Rate: Primary Source (CURRENCY\_SERVER\_PRIMARY) - Where to request external currency updates from (Primary source) Additional sources can be installed via plugins.
- Currency Exchange Rate: Secondary Source (CURRENCY\_SERVER\_BACKUP) - Where to request external currency updates from (Secondary source) Additional sources can be installed via plugins.
- HTML Editor (HTML\_EDITOR\_PREFERENCE) - Please select the HTML/Rich-Text editor you wish to use for composing Admin-related emails, newsletters, and product descriptions

## 1.2. Minimum Values

- First Name (ENTRY\_FIRST\_NAME\_MIN\_LENGTH) - Minimum length of first name
- Nick Name (ENTRY\_NICK\_MIN\_LENGTH) - Minimum length of Nick Name
- Last Name (ENTRY\_LAST\_NAME\_MIN\_LENGTH) - Minimum length of last name
- Date of Birth (ENTRY\_DOB\_MIN\_LENGTH) - Minimum length of date of birth
- E-Mail Address (ENTRY\_EMAIL\_ADDRESS\_MIN\_LENGTH) - Minimum length of e-mail address
- Street Address (ENTRY\_STREET\_ADDRESS\_MIN\_LENGTH) - Minimum length of street address
- Company (ENTRY\_COMPANY\_MIN\_LENGTH) - Minimum length of company name
- Post Code (ENTRY\_POSTCODE\_MIN\_LENGTH) - Minimum length of post code
- City (ENTRY\_CITY\_MIN\_LENGTH) - Minimum length of city
- State (ENTRY\_STATE\_MIN\_LENGTH) - Minimum length of state
- Telephone Number (ENTRY\_TELEPHONE\_MIN\_LENGTH) - Minimum length of telephone number
- Password (ENTRY\_PASSWORD\_MIN\_LENGTH) - Minimum length of password